

About infusion devices

Why is a Surefuser™+ used?

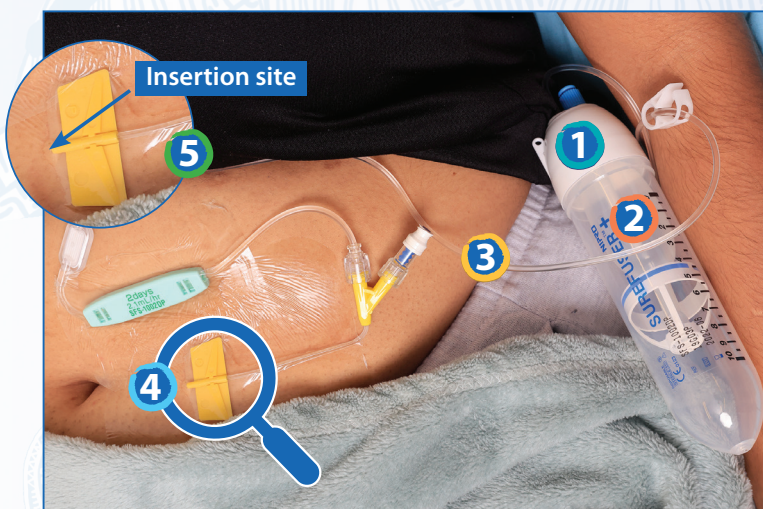
A Surefuser™+ is a way to give medicine to help manage symptoms such as pain.

- ✓ Safe
- ✓ No needles
- ✓ Medicine goes under the skin
- ✓ Medicine is given throughout the day and night
- ✓ Keeps the person comfortable
- ✓ Good when medicine cannot be swallowed
- ✓ Good when medicine cannot be absorbed well in the gut



★ These things help to keep the person comfortable.

How does the Surefuser™+ work?

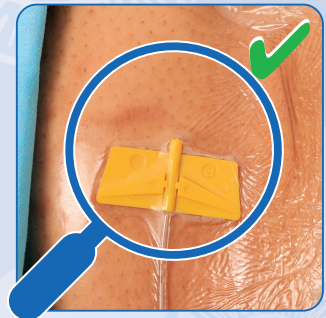


- 1 Single-use, disposable device
- 2 Contains medicine
- 3 Uses pressure to push medicine through tubing
- 4 Medicine goes into a plastic tube under the person's skin
- 5 The place where the plastic tube enters the skin is called the insertion site.

Ways to help look after the device

1 Check the insertion site a few times a day

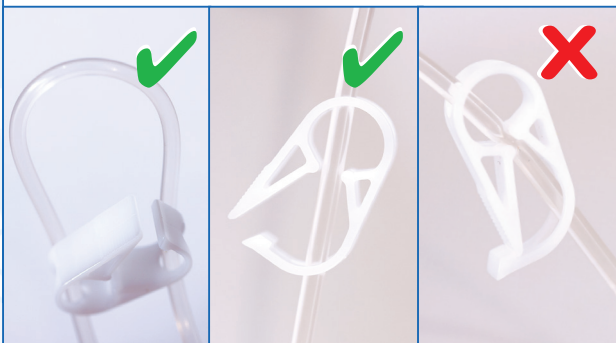
- Contact your nurse if you notice:
- Lump/swelling
 - Soreness
 - Bruising/redness
 - Leakage around the insertion site
 - The plastic tube has come out of the skin
 - The clear dressing is coming off



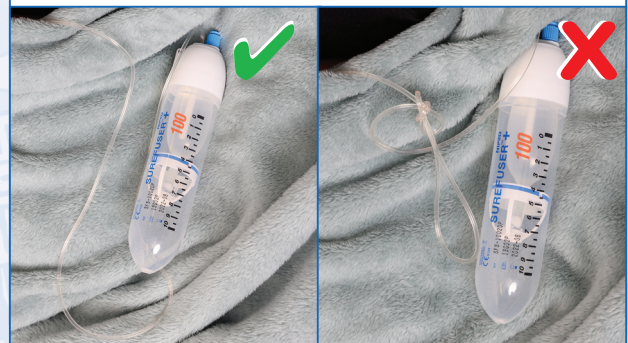
2 Check the pump a few times a day

- ★ You do not need to check the pump overnight.

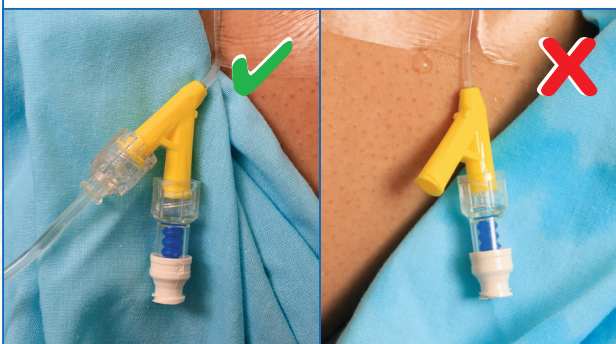
It is good if the clamp is not blocking the tubing.



It is good if the tubing is not tangled, kinked or squashed.



It is good if the tubing is securely connected to the yellow Y-arm.

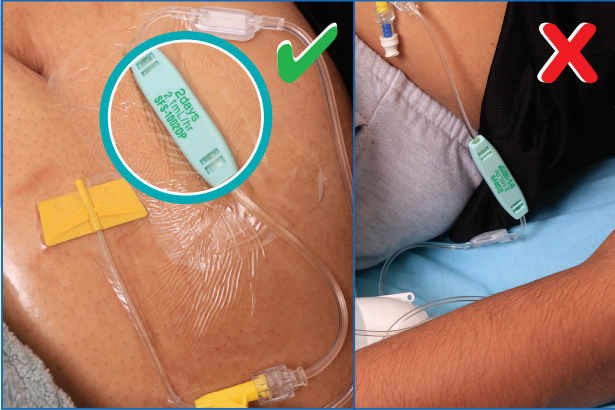


It is good if the device is at the same level as the insertion site.

- ★ The device should not hang above or below the insertion site.



It is good if the flow controller/
regulator is in contact with the
person's skin and held firmly in place.

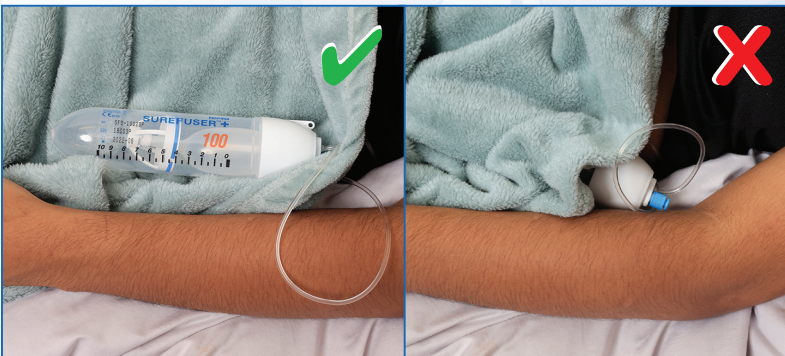


It is good if the blue infusion line
has moved towards 0.



★ Contact your nurse if you have any concerns.

3 Remember



The device should not get too hot or cold
Keep the room at a moderate temperature
and the device on top of the bedding.



The device is not
waterproof.

**If you
need help**



Service name:

T: