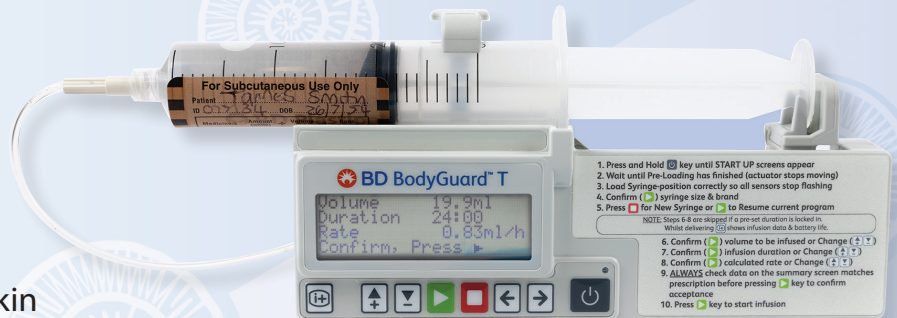


About syringe pumps

Why is a syringe pump used?

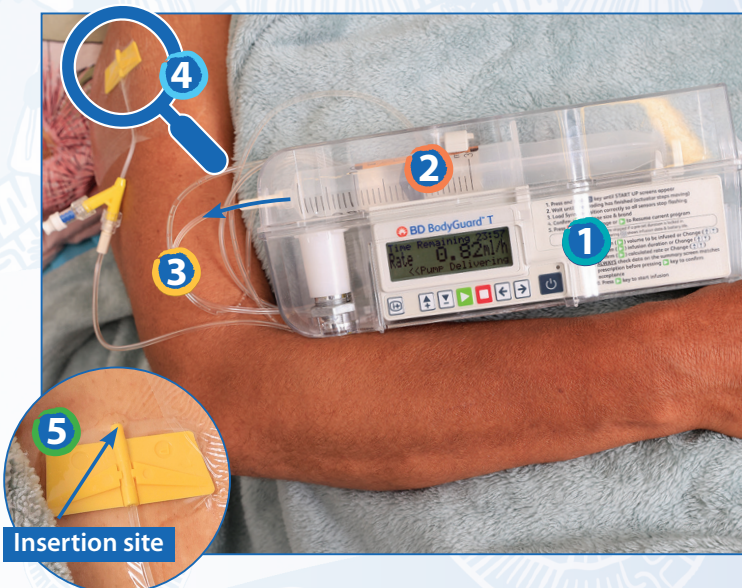
A syringe pump is a way to give medicine to help manage symptoms such as pain.

- ✓ Safe
- ✓ No needles
- ✓ Medicine goes under the skin
- ✓ Medicine is pumped throughout the day and night
- ✓ Keeps the person comfortable
- ✓ Good when medicine cannot be swallowed
- ✓ Good when medicine cannot be absorbed well in the gut



★ These things help to keep the person comfortable.

How does the pump work?



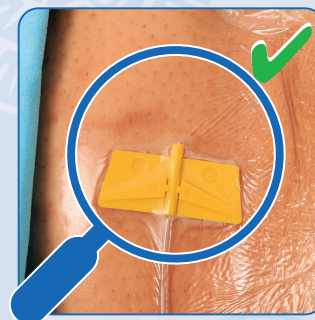
- 1 Uses a battery
- 2 Medicine is put in a syringe
- 3 Medicine is pumped from the syringe through tubing
- 4 Medicine goes into a plastic tube under the person's skin
- 5 The place where the plastic tube enters the skin is called the insertion site.

Ways to help look after the pump

1 Check the insertion site a few times a day

Contact your nurse if you notice:

- Lump/swelling
- Soreness
- Bruising/redness
- Leakage around the insertion site
- The plastic tube has come out of the skin
- The clear dressing is coming off



2 Check the pump a few times a day

You do not need to check the pump overnight.

It is good if the green light on the pump is flashing.



It is not good if the pump is flashing and alarming.



It is not good if the tubing is leaking.



Contact your nurse if you have any concerns.

3 Remember



Keep the pump in a locked box.



A bag can be used to carry the pump.



The pump is not waterproof.

If you need help



Service name:

T: