

Printing instructions

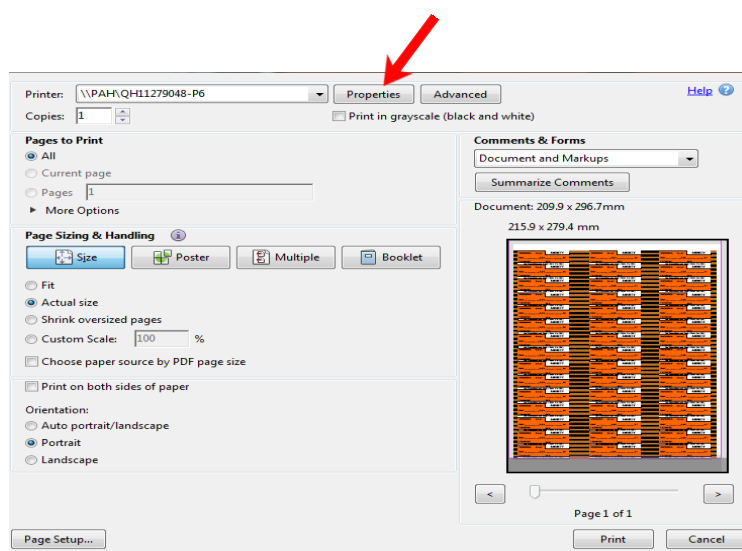
Colour-coded labels for syringes

The labels included as a part of the *caring@home* package are designed to be printed using:

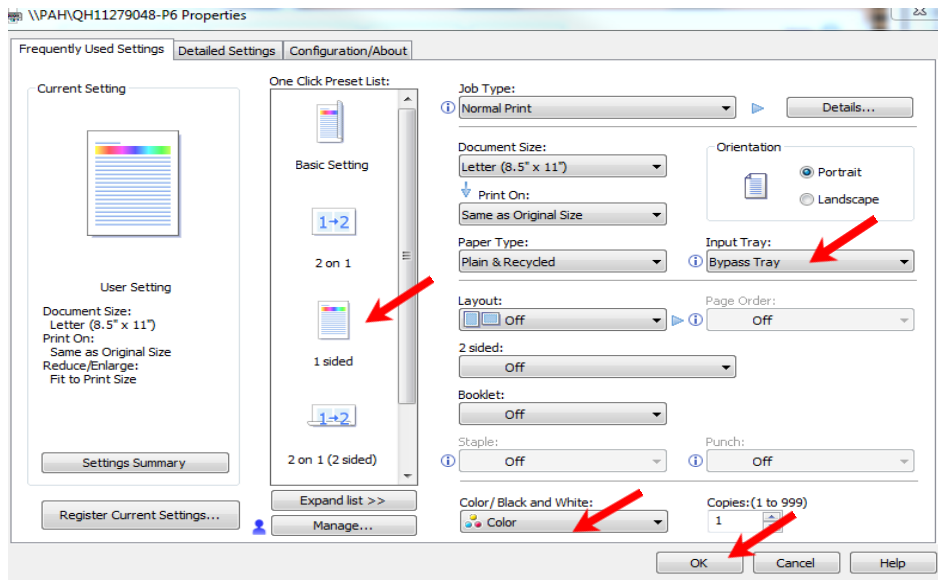
- Avery Quick Peel Blank White Smudge Free Address Labels
- 33 labels per sheet. 64x24.3mm (Reorder #959060, Software Code: L7157).

Each printer will be different, however to ensure alignment, it is recommended you print only one sheet of labels at a time and use the following printer settings:

- “Download” the labels from the *caring@home* website and save a copy to your local network. <https://www.caringathomeproject.com.au/tabid/5332/Default.aspx>.
Do not print the labels directly from the website, as it will not be an accurate print.
- Open the document on your local network.
- Click “File” in the menu bar, then “Print”
- Once the print screen has opened, click on “Properties”

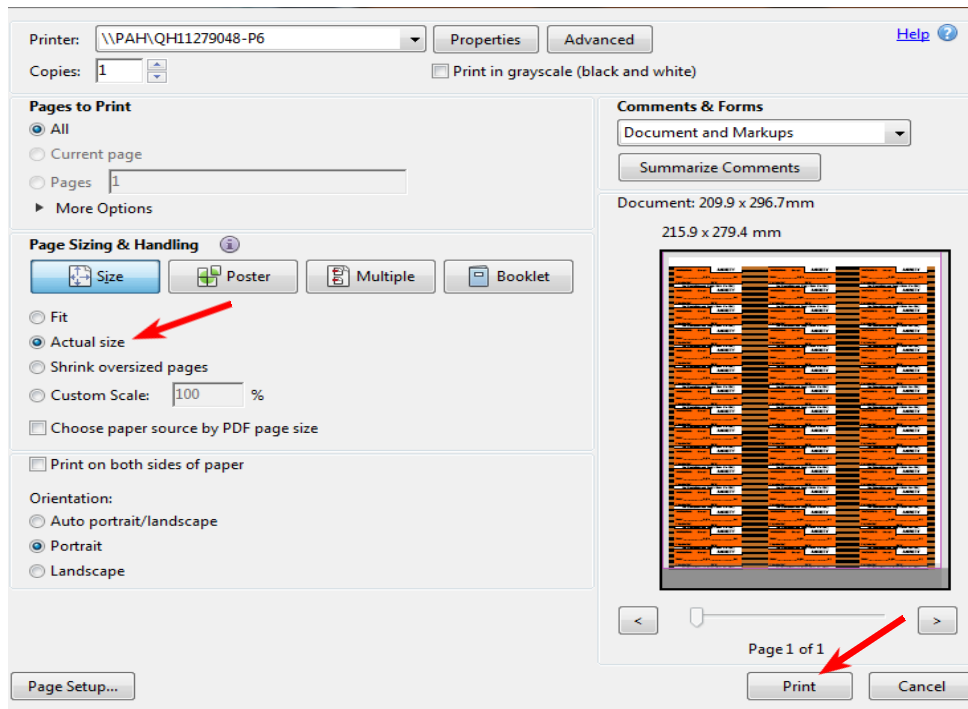


- Select “1 sided”
- Select “Colour”
- Select “Bypass Tray” and place the label sheets into the tray
- Select “OK”



- Select “Actual size”
- Press “Print.”

We recommend you print one page at a time and check to make sure each page has printed accurately before proceeding with the next page.



Repeat steps above for new label.