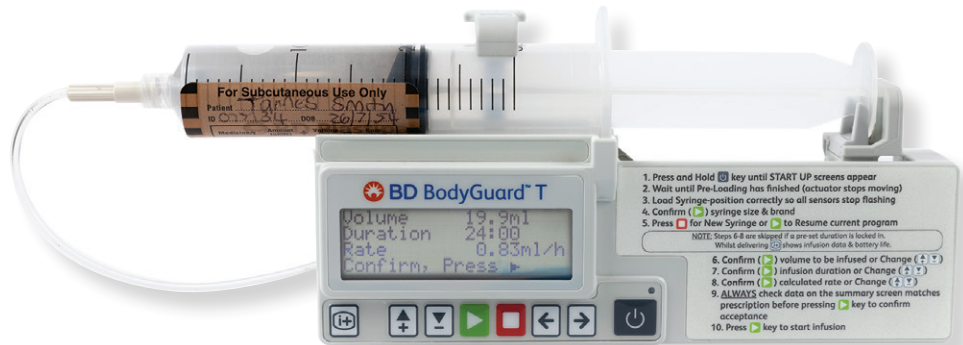




Information for carers:

# NIKI T34™, T34™ and BODYGUARD™ T syringe pumps

Syringe pumps deliver medicines under the skin at a steady rate throughout the day and night.



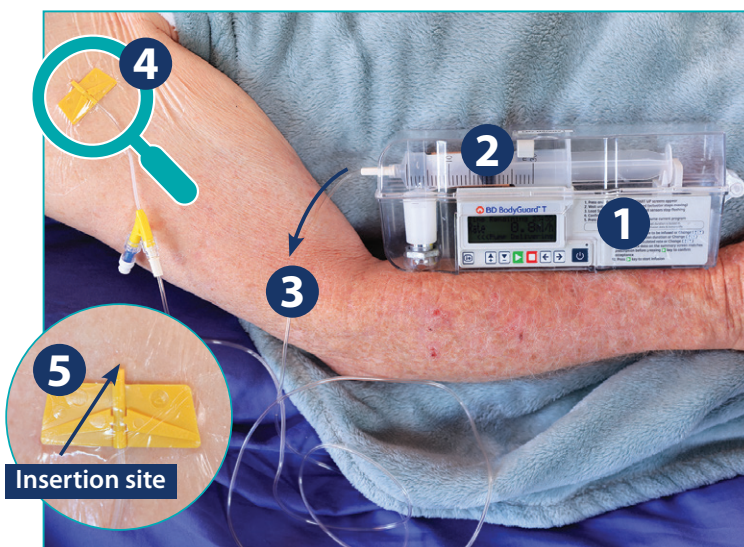
## Why is a syringe pump used?

A syringe pump is a safe, reliable and painless way to deliver medicine to help manage symptoms such as pain.

The pumps are used when oral medicine is:

- Not able to be swallowed easily
- Unlikely to be absorbed well in the gut.

## How does a syringe pump work?



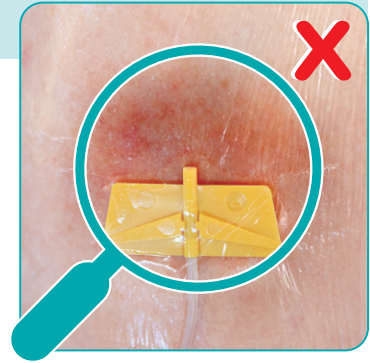
1. The syringe pump is a small battery-operated device.
2. Attached to the pump is a syringe containing medicine as prescribed by the doctor or nurse practitioner.
3. The medicine is pumped from the syringe through tubing.
4. The tubing is connected to a plastic cannula placed under the person's skin.
5. The place where the cannula enters the skin is called the insertion site.

The medicine is then absorbed into the body.

## How you can help

### Check the insertion site a few times a day

- Contact your nurse if you notice:
  - Swelling
  - Tenderness
  - Redness
  - Leakage around the insertion site
  - The cannula has come out of the skin
  - The clear waterproof dressing is not holding the cannula in place



### Check the pump a few times a day

★ You do not need to check the pump overnight.

- Make sure:

The green light on the pump is flashing



The pump is not alarming



The tubing is not leaking



★ Contact your nurse if you have any concerns.

## Remember



Keep the syringe pump in a locked box to protect it.



A pouch or holster can be used to carry the pump if the person is moving around.



The pump is not waterproof.

## If you need help



Service name: .....

T: .....