

How to put medicine in the syringe

1 What you need



2 Write on the medicine label



3 Wash your hands



6 Open the medicine



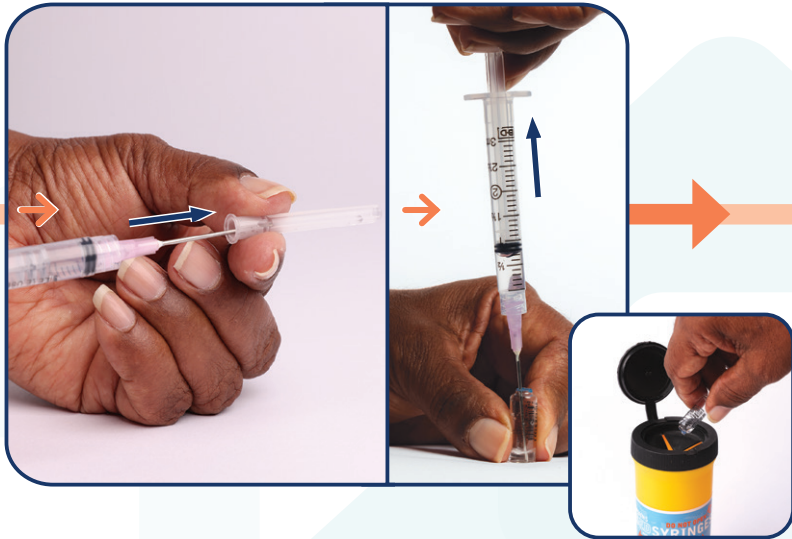
5 Twist the needle onto the syringe



4 Open the syringe and needle



7 Put medicine in the syringe



8 Remove air bubbles by gently flicking the syringe



9 Check the medicine level



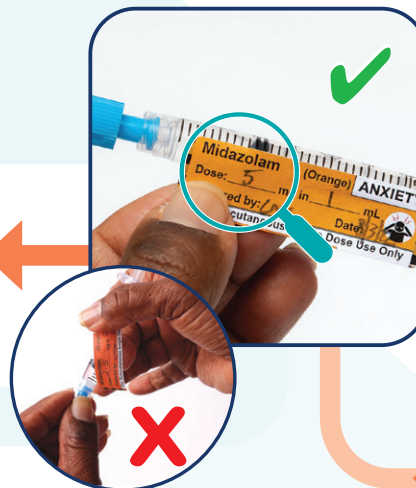
10 Twist the needle off



11 Twist the cap onto the syringe



12 Put the label on the syringe



13 Repeat steps to put sodium chloride (the flush) in another syringe



14 Put syringes in the clean container



If you need help

Service name:

T: